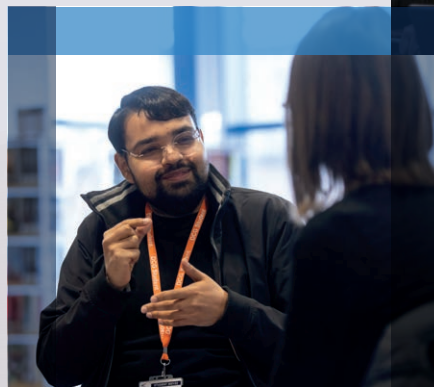


DCG WELCOMES

ALL OUR PARENTS AND CARERS



Welcome to DERBY COLLEGE GROUP

We're delighted to welcome all parents and carers to our community. At DCG, we're committed to supporting your young person throughout their journey with us. We also value your role and aim to keep you actively involved in their education and learning experience.

Personal tutor:

Pastoral coach:

STUDENT STUDY PROGRAMME

At DCG your young person can choose from one of the broadest ranges of subjects in the East Midlands, whether they want to follow a technical, vocational or academic route. We'll help your young person build a study pathway that's just right for them – based on their career plans and their existing qualifications and experience.

Whatever your young person chooses, they'll benefit from:

Personal and Professional Development:

Our specialist programme provides expert advice to help your young person make the right choices and ensure a smooth transition to the next stage of their life.

Digital knowhow:

Your young person will gain digital skills to aid their learning and keep pace with latest developments in business and industry.

Work experience:

Exciting placements, employer-led projects, guest speakers and company visits will give vital insights into the world of work. We have close links with over 2,000 employers.

Tailored support:

Your young person will be assigned a Student Experience and Progression Coach throughout their time at College, ensuring their learning stays on track. They can also access additional support depending on their individual learning needs.

English and maths:

Your young person will continue improving their English and maths skills alongside their studies, including working towards those all-important GCSE grades of 4 and above if they've not already achieved them. Our expert English and Maths team offers revision workshops and online support too.

Employability skills:

We equip young people with all the broader attributes employers are looking for, including communication, teamworking, creativity, leadership, enterprise, problem-solving and decision-making skills.

SUPPORT SERVICES FOR STUDENTS AT DCG

At DCG, we're proud to offer a wide range of support services to help every student thrive, both academically and personally. Whether it's wellbeing, learning support or careers advice, our dedicated teams are here to help. Read on to discover each team and how they can support your young person throughout their journey with us.

Learning Support Services

The Learning Support Services team is here to help your young person maximise their potential and reach their learning goals. We offer support on all college sites in-class, outside of the classroom, with exams and assessments and in the wider College environment. If your young person has a learning difficulty, disability, or any additional need, we're here to provide personalised support that's tailored to help them succeed and feel confident throughout their time with us.

Resilience Team

The Resilience team are available to support students who are struggling with elements of poor mental health, including anxiety, low mood and depression, panic, stress, and worry. Resilience coaches offer a limited number of one-to-one sessions, focusing on guided self-help to provide students with tools and techniques to manage their wellbeing independently.

Parental Engagement Worker

On hand to ensure effective communication with families, supporting student development through parent voice and feedback. Working in partnership with parents and carers to ensure a positive College experience for your young person and connect you with the services, support and information you need.

Student Services

The Student Services Team is here to provide your young person with the information, advice and guidance they need.

The team offers information on:

- Enrolment
- ID cards
- b-line cards / travel information
- Referrals to other teams for support such as Careers or Resilience

LIBRARIES FOR LEARNING

Library

The Library team are skilled researchers and willing to help your young person find the information they need and guide them to resources that perhaps they might not have considered to help them finish their assignments!

Bursary

Bursary is available to students who are enrolled on further education courses, either full-time or part-time, and who meet the eligibility criteria. Funding is not available for students on apprenticeships, higher education or full-cost courses where other funding rules may apply. Students must also meet the residency criteria.

Pastoral Coaches

As well as monitoring student's attendance and progress, the Pastoral Coach will coach individuals and small groups of students. The coach will work with students to develop their skills and help them to overcome barriers to their learning and progress including exam stress, workload, meeting deadlines and pastoral issues.



SUPPORT SERVICES



DCG Students' Union

Run by students for students, Derby College Students' Union (DCSU) is here to represent our students. Independent from the College and democratically controlled by students, we champion the learner voice, our student's input is crucial to ensure they have the best experience with DCG.

Careers

The Careers and Guidance Service is available to help with any decisions related to your young person's future career path. Our experienced team will help them make a well informed and realistic decision about their next steps.



SUPPORT FOR PARENTS AND CARERS

At DCG, we understand that **a young person's success is strengthened by the support they receive both at college and at home. That's why we're committed to working in partnership with parents and carers throughout their educational journey. Together, we can ensure your young person has the best possible experience at DCG.**

The Parents Portal

We have a dedicated online Parents Portal for you to log onto. The Parents Portal enables you to **view your child's live attendance, progress reports and SMART Targets.**

To access the Parents Portal log on to:
<http://moodle.derby-college.ac.uk>

> 'Quick links'

> 'Parent Portal'

For more information about how to access the Parents Portal visit the website:
www.derby-college.ac.uk/parents/parent-portal/

Join the DCG Parent and Carer Support Group

We have a Parent and Carer Support Group on Facebook, as a place for you to:

- Access resources and content related to well-being, careers, study skills
- Ask questions and offer suggestions related to College
- Network and support other parents and carers

We will also be delivering parent workshops and sessions on topics that you feel are most relevant to you.

Connect with us on facebook!

www.facebook.com/groups/DCGParentCarerSupportGroup

Sign up to our Parent and Carers monthly e-newsletter

The Parents e-newsletter is sent to you via email once a month. It contains information on key dates, events and extracurricular activities that your young person may be involved in at College. To ensure that you receive the newsletter sign up at: www.derby-college.ac.uk/parents/keep-in-touch

Parent/Carer Voice

We value your input and would appreciate your feedback to help us improve the experience for your young person. You can contact us by email:
parentvoice@derby-college.ac.uk



Young Carers / LAYP

Being a young carer or a looked after young person may have an impact upon your young person's attendance, wellbeing and overall college experience. We offer lots of support at college, there will be a designated person at each site that can offer support as and when this is needed.

Study Skills

Study Coaches offer academic support beyond the classroom, providing additional support on top of the timetable. Coaches can offer support with assignments, projects, organisational skills, academic writing, referencing and revision skills.

Work Experience

Work Experience is essential for students to gain a hands-on understanding of the world of work whilst developing valuable skills, knowledge, and behaviours required in the workplace.

The Work Experience & Progression Team have Work Experience and Progression Mentors based at each campus; they are linked to each curriculum area and work closely with employers and curriculum to provide the best quality opportunities for all DCG students.

Transport

We want your young person to get to College as easily, conveniently and cheaply as possible. We can help them find the best transport option – whether it's cycling, using a motorcycle or moped, taking the train, catching a bus or walking.

Our city-centre campuses are all easily accessible by public transport and we provide a College bus service at the beginning and end of the college day between the main campuses, serving locations on these routes.

Visit our website for more information:
www.derby-college.ac.uk/transport

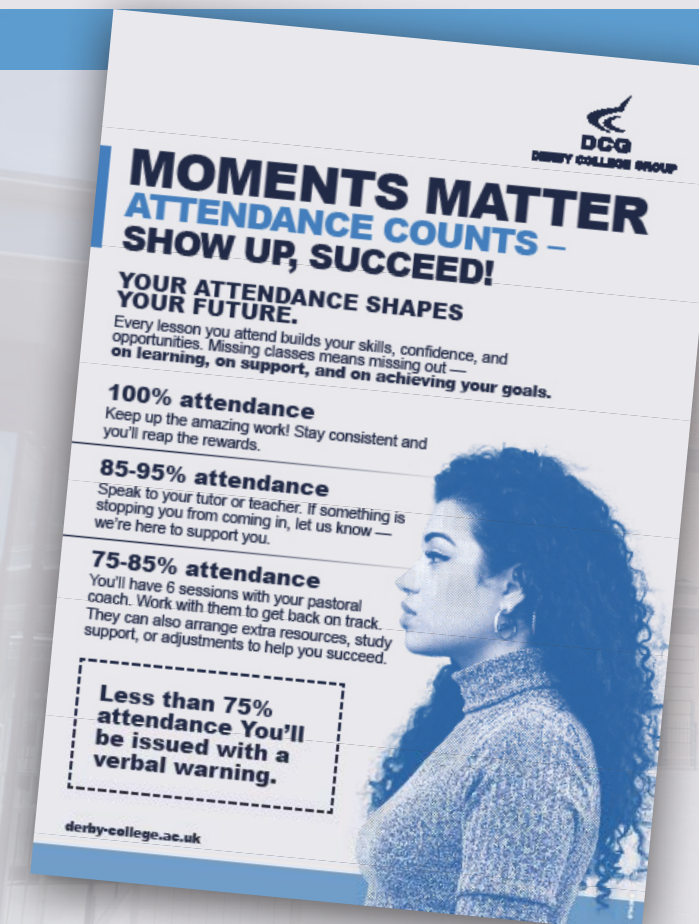
ATTENDANCE COUNTS

Your young person's attendance shapes their future.

Every lesson your young person attend builds their skills, confidence, and opportunities. Missing classes means missing out — on learning, on support, and on achieving their goals.

It is your young person's responsibility to report an absence via the online form on our website. Completing the form automatically updates the students' register: www.derby-college.ac.uk/student-absence-lateness-reporting/

Wherever possible, please ask your young person to login and report their absence themselves, via the above process. Alternatively, if you wish to report an absence on their behalf, please email: PastoralCoaches@derby-college.ac.uk



DATES FOR YOUR DIARY

Parent and Carer Consultation Events

Our Parent and Carer Consultation Evenings are a great opportunity for you to speak to your student's teachers and discuss their progress, achievements, and areas for improvement.

Wednesday 3rd December 2025

The Joseph Wright Centre – Year 1 and GCSE+ students
The Roundhouse – Year 2 students
Broomfield Hall – Year 2 students

Wednesday 11th February 2026

The Roundhouse – Year 1 students
Broomfield Hall – Year 1 students

Wednesday 11th March 2026

The Joseph Wright Centre – Year 2 students

Wednesday 25th March

The Joseph Wright Centre – Invite only (GCSE+, Science) (Not A-level)

The Roundhouse – Invite only

Broomfield Hall – Invite only

Wednesday 20th May

The Joseph Wright Centre – Invite only (A-level) (Not GCSE+, Science)

The Roundhouse – Invite only

Broomfield Hall – Invite only

For more information on these events and how to book your place, visit the website: www.derby-college.ac.uk/parents/parents-and-carers-evenings/



Additional Events for Parents and Carers

Throughout the year, DCG hosts a variety of online and in-person events designed specifically for parents and carers. These sessions cover important topics such as wellbeing, student support, and guidance on how to stay involved in your young person's education. We'll keep you informed about upcoming events via our website, social media channels, and our monthly parent/carers e-newsletter.

To stay up to date, be sure to check our main College Events page regularly: www.derby-college.ac.uk/event/



Derby College Curriculum/Support Calendar 2025/2026												DCG
Core Teaching				Mandatory Inset								
Student Holidays (FT)				Enrolment								
Bank Holidays				Planning Week								
Closure Days				GCSE Results								
Timetabling/Rooming Planning				Year 2 Transition								
A Level Results				Induction/Teaching commences								
September 2025 (17 days)												
Week no.	M	T	W	T	F	S	S					
1		1	2	3	4	5	6	7				
2	8	9	10	11	12	13	14					
3	15	16	17	18	19	20	21					
4	22	23	24	25	26	27	28					
5	29	30										
October 2025 (18 days)												
Week no.	M	T	W	T	F	S	S					
1												
2	1	2	3	4	5	6	7					
3	8	9	10	11	12	13	14					
4	15	16	17	18	19	20	21					
5	22	23	24	25	26	27	28					
6	29	30	31									
November 2025 (20 days)												
Week no.	M	T	W	T	F	S	S					
1												
2	1	2	3	4	5	6	7					
3	8	9	10	11	12	13	14					
4	15	16	17	18	19	20	21					
5	22	23	24	25	26	27	28					
6	29	30										
December 2025 (14 days)												
Week no.	M	T	W	T	F	S	S					
1												
2	1	2	3	4	5	6	7					
3	8	9	10	11	12	13	14					
4	15	16	17	18	19	20	21					
5	22	23	24	25	26	27	28					
6	29	30	31									
January 2026 (19 days)												
Week no.	M	T	W	T	F	S	S					
1												
2	1	2	3	4	5	6	7					
3	8	9	10	11	12	13	14					
4	15	16	17	18	19	20	21					
5	22	23	24	25	26	27	28					
6	29	30	31									
February 2026 (15 days)												
Week no.	M	T	W	T	F	S	S					
1												
2	1	2	3	4	5	6	7					
3	8	9	10	11	12	13	14					
4	15	16	17	18	19	20	21					
5	22	23	24	25	26	27	28					
March 2026 (20 days)												
Week no.	M	T	W	T	F	S	S					
1												
2	1	2	3	4	5	6	7					
3	8	9	10	11	12	13	14					
4	15	16	17	18	19	20	21					
5	22	23	24	25	26	27	28					
6	29	30	31									
April 2026 (14 days)												
Week no.	M	T	W	T	F	S	S					
1												
2	1	2	3	4	5	6	7					
3	8	9	10	11	12	13	14					
4	15	16	17	18	19	20	21					
5	22	23	24	25	26	27	28					
6	29	30	31									
May 2026 (15 days)												
Week no.	M	T	W	T	F	S	S					
1												
2	1	2	3	4	5	6	7					
3	8	9	10	11	12	13	14					
4	15	16	17	18	19	20	21					
5	22	23	24	25	26	27	28					
6	29	30	31									
June 2026 (22 days)												
Week no.	M	T	W	T	F	S	S					
1												
2	1	2	3	4	5	6	7					
3	8	9	10	11	12	13	14					
4	15	16	17	18	19	20	21					
5	22	23	24	25	26	27	28					
6	29	30	31									
July 2026 (3 days)												
Week no.	M	T	W	T	F	S	S					
1												
2	1	2	3	4	5	6	7					
3	8	9	10	11	12	13	14					
4	15	16	17	18	19	20	21					
5	22	23	24	25	26	27	28					
6	29	30	31									
August 2026												
Week no.	M	T	W	T	F	S	S					
1												
2	1	2	3	4	5	6	7					
3	8	9	10	11	12	13	14					
4	15	16	17	18	19	20	21					
5	22	23	24	25	26	27	28					
6	29	30	31									
Teaching Days Total: 177												
Autumn Term: 69												
Spring Term: 54												
Summer Term: 54												

For an accessible version of this calendar visit the Derby College website at: www.derby-college.ac.uk/derby-college-term-dates/ or scan the QR code



We hope you've found this booklet helpful.

There's plenty more information available on our website:

www.derby-college.ac.uk

If you have any questions or would like further support, please don't hesitate to contact our Parent Voice team at: parentvoice@derby-college.ac.uk - we're here to help!

Where to find us

The Roundhouse

Roundhouse Road
Pride Park
Derby
DE24 8JE



The Joseph Wright Centre

Cathedral Road
Derby
DE1 3PA



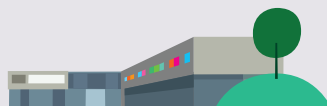
Broomfield Hall

Morley
Ilkeston
Derby
DE7 6DN



The Community College

2 Pimlico
Ilkeston
Derbyshire
DE7 5JS



DERBY COLLEGE GROUP

0800 028 0289

enquiries@derby-college.ac.uk

www.derby-college.ac.uk

